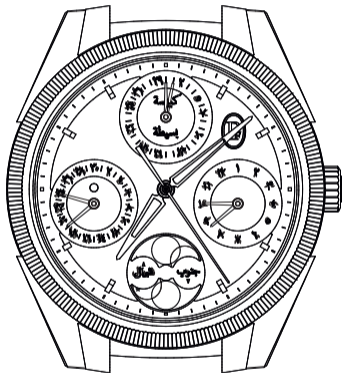


Tonda PF Hijri Perpetual Calendar.

PF009

PARMIGIANI

FLEURIER



THE WATCH MECHANISM FEATURES A CALENDAR BASED ON THE CYCLES OF THE MOON.

The Hijri or Islamic lunar calendar consists of 354 or 355 days divided into 12 months of 29 or 30 days, depending on the moon phase. The length of the months is based on the principles of the common calendar, with the first month being days. Only the twelfth month has a variable number of 29 or 30 days.

This variation depends on the current year type.

A common year lasts 354 days. The twelfth month of this year has 29 days.

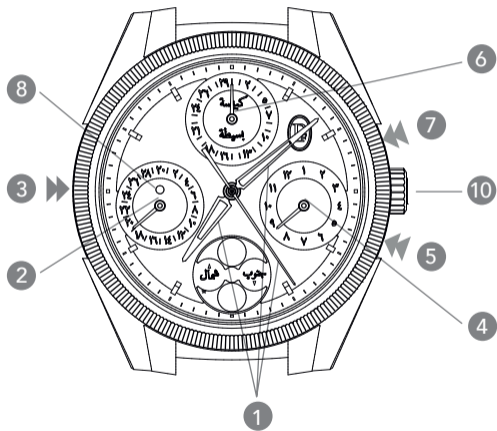
An abundant year lasts 355 days. The twelfth month of this year has 30 days.

The common and abundant years are arranged in cycles of 30, 19 of which are common years and 11 are abundant years.

Over this 30-year cycle:

The common years are: 1, 3, 4, 6, 8, 9, 11, 12, 14, 15, 17, 19, 20, 22, 23, 25, 27, 28 and 30.

The abundant years are: 2, 5, 7, 10, 13, 16, 18, 21, 24, 26, and 29.



INDICATIONS

1. Hours, minutes, seconds
2. Date
3. Moon phase and date correction
4. Month
5. Month correction
6. Year
7. Year correction
8. 29/30 days month indicator
9. Moon phase
10. Crown



counterclockwise  clockwise

Tonda PF Hijri Perpetual Calendar.

PF009

7

Note

To adjust all the watch functions, please refer to a Hegirian calendar and respect the following adjustment order:

1. Winding
2. Time-setting
3. Moon phase and date correction
4. Month correction
5. Year correction

The change of the moon phase and date indicators are not instantaneous, but are carried out gradually, for 2 hours.

The moon phase and the date jump at midnight with a tolerance of +/- 5 minutes.

The visible passage of time of the moon phase and the jump of the date hand takes place between 10:00 p.m. and 12:30 a.m.

The 29/30 day month indicator is automatically adjusted.

All other indications are instantaneous.



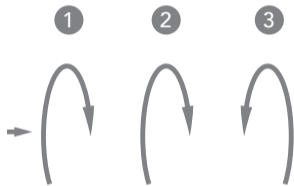
counterclockwise  clockwise

WINDING

A self-winding watch winds itself automatically when worn on your wrist. It is important to emphasize that in order to reach the full power reserve the watch must be worn for at least twelve hours.

Furthermore, if the power reserve in the watch is completely exhausted, you will need to turn the crown (10) for approximately 15 full rotations. This will activate the mechanism properly before wearing the watch.

Note that the number of crown rotations needed to ensure a watch is fully wound varies according to the caliber. The watch can be wound by rotating the crown (10) at any time



counterclockwise  clockwise

SETTING THE TIME

Pull the crown (10) out a notch.

Turning the crown (10) counterclockwise will move the hour and minute hands forward until the date hand jumps, it is then midnight.

Turn the crown (10) a few minutes past the desired time and then go back to the time to be set.

Push the crown (10) back into its initial position.

Note: This correction can be done in both directions

When the crown is pulled out, the seconds hand stops (stop seconds function).

When switching to midnight, indications of the moon phase, date, month, indicator of 29/30 days month and year may change depending on the current cycle.

The other indications remain synchronized.



counterclockwise  clockwise

Tonda PF Hijri Perpetual Calendar.

PF009

13

WARNING!

If you turn the hour and minute hands counterclockwise and pass midnight, you will need to move the hands

back to before 10 p.m. so that the date can change when the hands pass at midnight.

When the time displayed is between 10 p.m. and 12:30 a.m., ONE SHOULD NEVER SET THE TIME OR CORRECT THE CALENDAR (not to be confused with 10 a.m. and 12:30 p.m.).

When the watch is stopped and the time displayed is between 10:00 p.m. and 12:30 a.m. (not to be confused with 10:00 a.m. and 12:30 p.m.), please wind your watch and wait until the hands passes 12:30 a.m. (see Winding).

Only use the correction tool provided with the watch to adjust the correctors



counterclockwise  clockwise

SETTING THE MOON PHASE & DATE

Pushing down the corrector button on the left side of the case (3) once jumps the date hand by one day and is the equivalent of one lunar day (the date is also synchronized with the moon).

The continuous pressing the corrector (3) advances the date hand to the desired day.

If the indications of the month and year have already been set and the watch has stopped, there is no need to make a complete adjustment of the calendar. Instead:

Check that the time indicated by the watch is not between 10:00 p.m. and 12:30 a.m. Not to be confused with 10 a.m. and 12:30 p.m.

Wind - Set the time - Correct the moon phase and date

Note: This correction is one-directional only.

When correcting the date from the 29th to the 1st, or from the 30th to the 1st, the indicator of 29/30 days month and year may change depending on the current cycle.

This correction simultaneously corrects the indicator of the 29/30 days month, and year.



counterclockwise  clockwise

SETTING THE MONTH

Pushing down the corrector button on the right side of the case (5) once corresponds to a leap of the month's hand.

The continuous pressing of the corrector (5), you may advance the month's hand to the desired one.

Note

This correction is one-directional.

When correcting from the 12th month to the 1st, the indicator of 29/30 days month and year may change depending on the current cycle.



counterclockwise  clockwise

SETTING THE YEAR

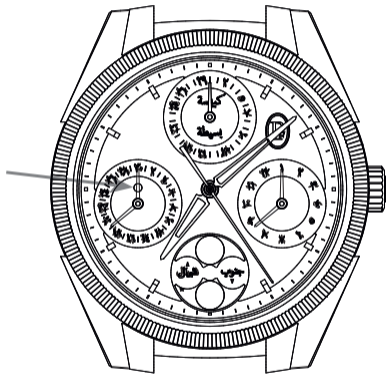
Pushing down the corrector button (7) on the top right corner of the case once corresponds to a leap of the year's hand.

The continuous pressing of the corrector (7) advances the year's hand to the desired one.

Note

This correction is one-directional.

If the month hand is positioned on the 12th month and the years are corrected, the 29/30 day month indicator may change depending on the current cycle.



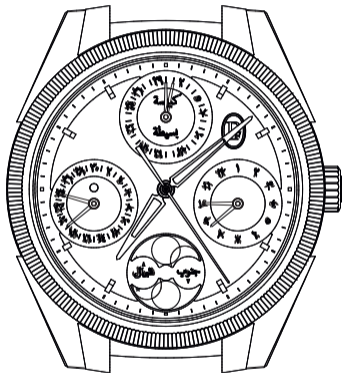
counterclockwise  clockwise

INDICATEUR DES MOIS 29/30 JOURS

The 29/30 day month indicator (8) allows the display of two colors through a window:

The white color indicates that the current month lasts 29 days

The yellow color indicates that the current month lasts 30 days



counterclockwise  clockwise

Tonda PF Hijri Perpetual Calendar.

PF009

23

Note

Example of display on May 24, 2020 according to a Gregorian calendar.

PARMIGIANI.COM

