

Tonda PF Split Seconds Chronograph
PF361

PARMIGIANI
FLEURIER



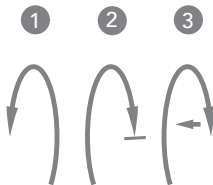
Tonda PF Split Seconds Chronograph

PF361

3

INDICATIONS

1. Hours, minutes, seconds counter
2. Chronograph seconds
3. Split-second
4. 30-minute counter
5. 12-hour counter



counterclockwise  clockwise 

Tonda PF Split Seconds Chronograph

PF361

5

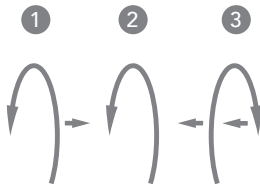
WINDING

Your watch is equipped with a hand-wound mechanical movement. We advise winding it fully every day, at a set time, preferably in the morning. To do this:

1. Unscrew the crown by turning it counterclockwise until it is released.
2. Turn the crown clockwise to the end stop, without forcing it.
3. Press the crown against the case while screwing the crown back in.

The watch can be wound using the crown at any time.

When fully wound, the watch has a power reserve of 65 hours. Intensive use of the chronograph may affect the power reserve.



counterclockwise   clockwise

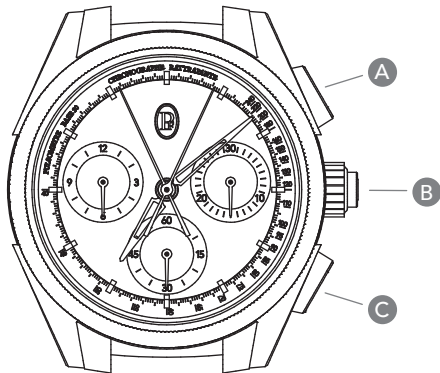
Tonda PF Split Seconds Chronograph

PF361

7

SETTING THE TIME

1. Unscrew the crown and pull it out one notch.
2. Turn the crown counterclockwise to set the hands to the desired time.
3. Push the crown back into its initial position, and press it against the case to screw it back in.



Tonda PF Split Seconds Chronograph

PF361

9

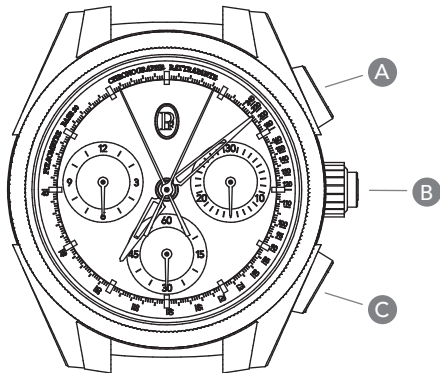
SPLIT-SECONDS CHRONOGRAPH

Description of push-pieces

- A. Start/stop push-piece
- B. Split-second push-piece
- C. Reset push-piece

The two chronograph hands are started and stopped by pressing push-piece A successively. If you want to measure a split time without stopping the chronograph, press push-piece B. Only the split-second hand will stop. Pressing push-piece B a second time will enable the split-second hand to catch up to the chronograph hand without interrupting the timing. Press push-piece B again to measure a second split time.

Intensive use of the chronograph may affect the power reserve.



Tonda PF Split Seconds Chronograph

PF361

11

START / STOP

1. Pressing push-piece A activates the chronograph hand and the split-seconds hand.
2. Pressing push-piece B will stop the split-second hand.
3. Pressing push-piece B a second time will enable the split-second hand to catch up to the chronograph hand.
4. Pressing push-piece A will stop the chronograph.
5. Pressing push-piece C for one second will reset the chronograph, split-second and counter hands.

NB: it is recommended to avoid any resets unless the split-second hand is aligned on top of the chronograph hand. Otherwise, the split-second hand will remain in its split time position. You would then need to press push-piece B to reset it.

PARMIGIANI.COM

