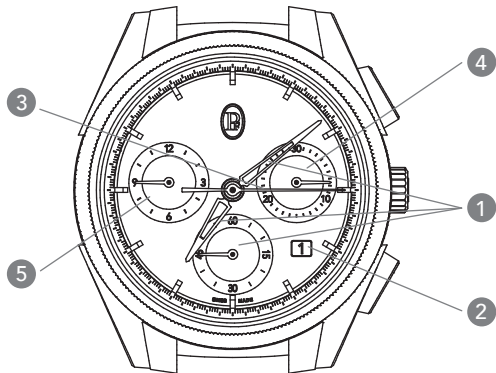


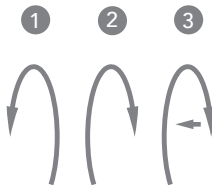
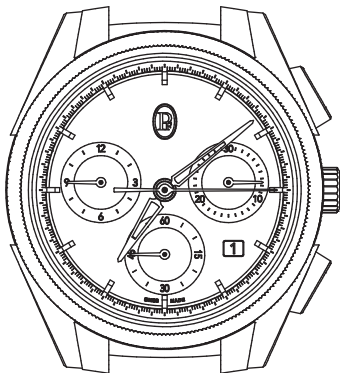
Tonda PF Chronograph
PF070

PARMIGIANI
FLEURIER



INDICATIONS

1. Hours, minutes, seconds counter
2. Date
3. Chronograph seconds
4. 30-minute counter
5. 12-hour counter



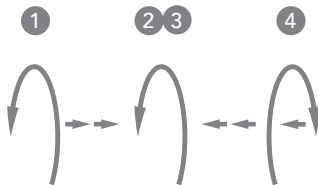
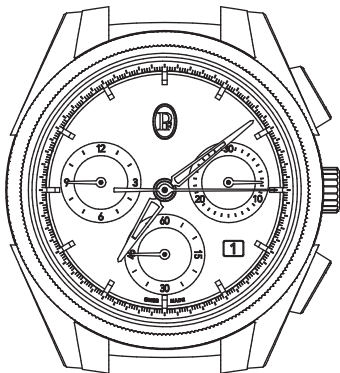
counterclockwise  clockwise

WINDING

Your watch is wound automatically when worn on your wrist. To obtain the full power reserve, the watch must be worn for at least twelve hours. This figure may vary depending on the type of user. Furthermore, if the watch's power reserve is completely exhausted, you will need to turn the crown through approximately 15 rotations; this will activate the mechanism properly before you put on the watch. Note that the number of crown rotations needed to ensure a watch is fully wound varies depending on the caliber. The watch can be wound using the crown at any time. If it has stopped, you will need to wind it. To do this:

1. Unscrew the crown by turning it counterclockwise until it is released.
2. Turn the crown through a few rotations clockwise to wind your watch.
3. Press the crown against the case while screwing the crown back in.

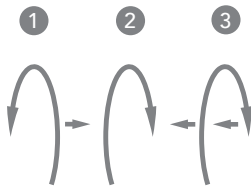
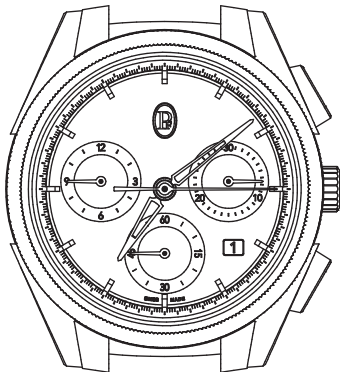
The watch can be wound using the crown at any time.



counterclockwise   clockwise

SETTING THE TIME

1. Unscrew the crown and pull it out two notches.
2. Turn the crown counterclockwise to move the hands forward, until the date (calendar) disc jumps (when passing midnight).
3. Turn the crown to set the hands to the desired time.
4. Push the crown back into its initial position, and press it against the case to screw it back in.

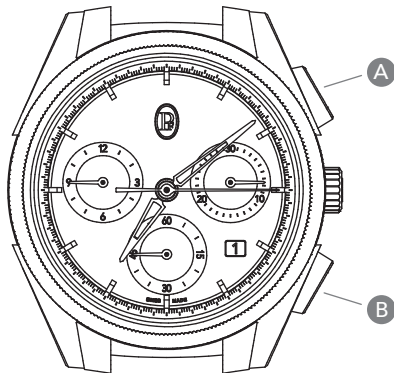


counterclockwise   clockwise

SETTING THE DATE

1. Unscrew the crown and pull it out one notch.
2. Turn the crown clockwise until the desired date is displayed.
3. Push the crown back into its initial position, and press it against the case to screw it back in.

Note: do not make adjustments between 10:00 PM and 1:00 AM.



CHRONOGRAPH

Description of push-pieces

A. Start/stop push-piece

B. Reset push-piece

1. Press push-piece A to start the chronograph.
2. Press push-piece A again to stop the chronograph. Timing can be restarted, if you wish, by pressing push-piece A a third time.
3. When timing has stopped, press push-piece B to reset the chronograph hand and counters.

Note: a full reset can only be carried out when the chronograph has stopped.

PARMIGIANI.COM

