

Tonda GT Chronograph (steel)
PF043



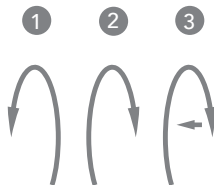
Tonda GT Chronograph (steel)

PF043

3

INDICATIONS

1. Hours, minutes, seconds counter
2. Date, month
3. Chronograph seconds
4. 30-minute counter
5. 12-hour counter



Tonda GT Chronograph (steel)

PF043

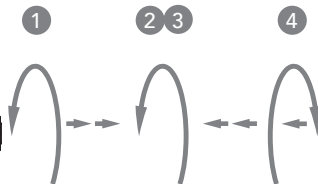
5

WINDING

Your watch automatically self-winds when you wear it. To become fully wound, it must be worn for at least 12 hours. This may vary depending on the type of user. If the watch is completely unwound, the crown will have to be turned approximately 15 times; this properly activates the mechanism. Note: the number of crown turns required to completely wind a watch varies depending on the caliber. Winding by the crown can be done at any time. When it is stopped due to an insufficient charge, it must be rewound. For this watch:

1. Unscrew the crown by turning it counterclockwise until it is released.
2. Turn the crown a few times clockwise to wind your watch.
3. Screw the crown back in while pressing it against the case.

Winding by the crown can be done at any time.



counterclockwise  clockwise

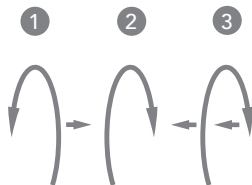
Tonda GT Chronograph (steel)

PF043

7

SETTING THE TIME

1. Unscrew and pull the crown out two notches.
2. Turn the crown anti-clockwise to advance the hands until the date disc (calendar) jumps (it is then midnight).
3. Turn the crown a few minutes beyond the desired time, then return to the time to be set.
4. Push the crown back to its initial position and screw it back down while pressing it against the case.



counterclockwise  clockwise

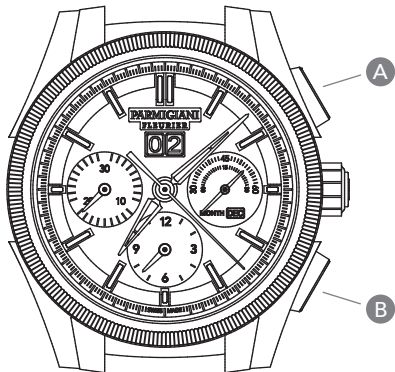
Tonda GT Chronograph (steel)
PF043

9

SETTING THE DATE

1. Unscrew and pull the crown out one notch.
2. Turn the crown clockwise to scroll to the desired date.
3. Push the crown back to its initial position and screw it back in while pressing it against the case.

Note: do not make adjustments between 10 p.m. and 1 a.m.



Tonda GT Chronograph (steel)

PF043

11

CHRONOGRAPH

Description of the push-buttons

A. Start and stop push-button

B. Reset push-button

1. Pressing push-button A once starts the chronograph.
2. A second press on push-button A stops the chronograph. To resume timing, press button A again.
3. When timing is stopped, pressing push-button B returns the chronograph hand and the counters to zero.

Note: A complete reset can only be done when the chronograph is stopped.

PARMIGIANI.COM

