

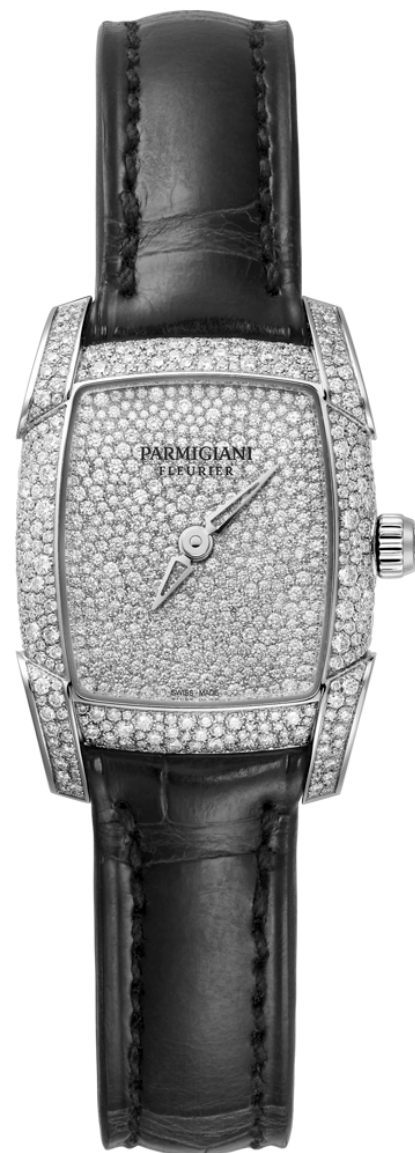
# PARMIGIANI

FLEURIER

1 | 2

## KALPA PICCOLA WHITE GOLD FULL SET SNOW SETTING

reference pfc196-1234600-ha1421



HORLOGERIE

## KALPA PICCOLA WHITE GOLD FULL SET SNOW SETTING

reference pfc196-1234600-ha1421

### MOVEMENT

Calibre	PF602
Winding	Quartz
Total dimensions	19.4 x 16.1
Thickness	2.95 mm
Frequency	32768 Hz
Nb of components	76
Nb of jewels	6

### FUNCTIONS

Hours, minutes
----------------

### CASE

Dimensions	30.3 x 36.2 mm
Thickness	9.4 mm
Material	18ct white gold
Nb of diamonds	471
Carats	1.2100
Water-resistance	30 m
Back	Anti-reflective sapphire
Glass	Anti-reflective sapphire

### DIAL

Colour	Full set
Index	Non
Hands	Skeleton Delta-shaped
Nb of diamonds	394
Carats	0.6500

### BRACELET

Brand	Hermès
Material	Alligator
Colour	Black

### BUCKLE

Type	Pin buckle
Material	18ct white gold